



Easy Read



Direct Payment Survey



Making it easier to pay your direct payment contribution.



This easy read is from the:

Adult Social Care Finance Service.



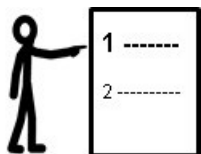
We are responsible for Direct Payments.



We would like you to take part in our direct payments consultation by completing this survey.



If you need help to complete the survey please ask someone who supports you.



What is in the document:

Page 2 to 3 What is a direct Payment

Page 4 Why would we like you to take part in the survey

Page 5 Other ways you can tell us what you think.

Page 5 When the survey ends and where to send your completed survey.

Page 6 to 8 Survey Questions



What is a direct Payment?



Before you can receive support someone from the council will meet to agree what your care and support needs are.



This is called a Social Care Assessment it helps you think about the areas where you need help and support.



After the assessment the cost to meet your agreed care and support needs will be worked out.



Usually people will have to pay something towards their care and support.

This payment is called a contribution.



There are 2 ways money can be used to pay towards your care and support needs.



1. **Managed Personal Budget** - the council will arrange and pay for your care and support.



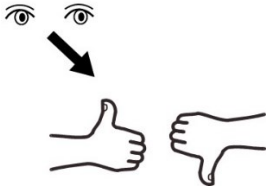
2. **Direct Payment** - the council gives you the money to arrange and pay for the support yourself.



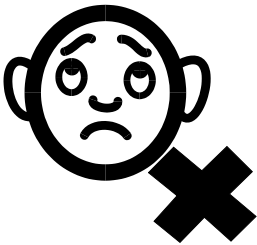
This survey is to find out what you think about direct payments.



Why we would like you to take part in the survey



We have reviewed how the direct payments service is working.



People told us the way we do direct payments is hard to understand.



When people are paid different benefits they might not know how much money to put aside to pay for their contribution.



We think it will make it easier if you get an invoice every 4 weeks telling you how much your contribution is, how to pay it and when.



Other ways you can tell us what you think.

There will be 3 meetings where people can ask us any questions they have.



Online or Face to face meetings



Will send out details of when these meetings are and how to join.



For more information please contact:

Name: Bridget Shilton

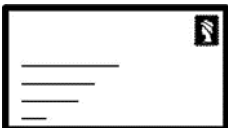
Email: bridgette.shilton@nottsc.gov.uk



The consultation ends on:

November 12th 2023

Please return your survey to:



Post:

Sir John Robinson House
Sir John Robinson Way
Arnold
Nottingham
NG5 6DA



Email:

BusinessSupportASCSJRW@nottsc.gov.uk



Survey Questions

It is your choice to do the survey or not.

You don't have answer every question.



Question 1

Do you currently get a direct payment ?



Yes



No



Question 2

Do you support someone to manage their direct payment account and to make their payments ?



Yes



No



Question 3

Does the way we pay direct payments stop you from deciding to have a direct payment yourself?



Yes



No



Question 4

Do you or the person who helps you make your direct payment contributions understand what should be paid and when?



Yes



No

Question 5



Would it be easier to pay your contribution towards your direct payment if it were paid in full and we send you an invoice saying what your contribution is?



Yes



No