

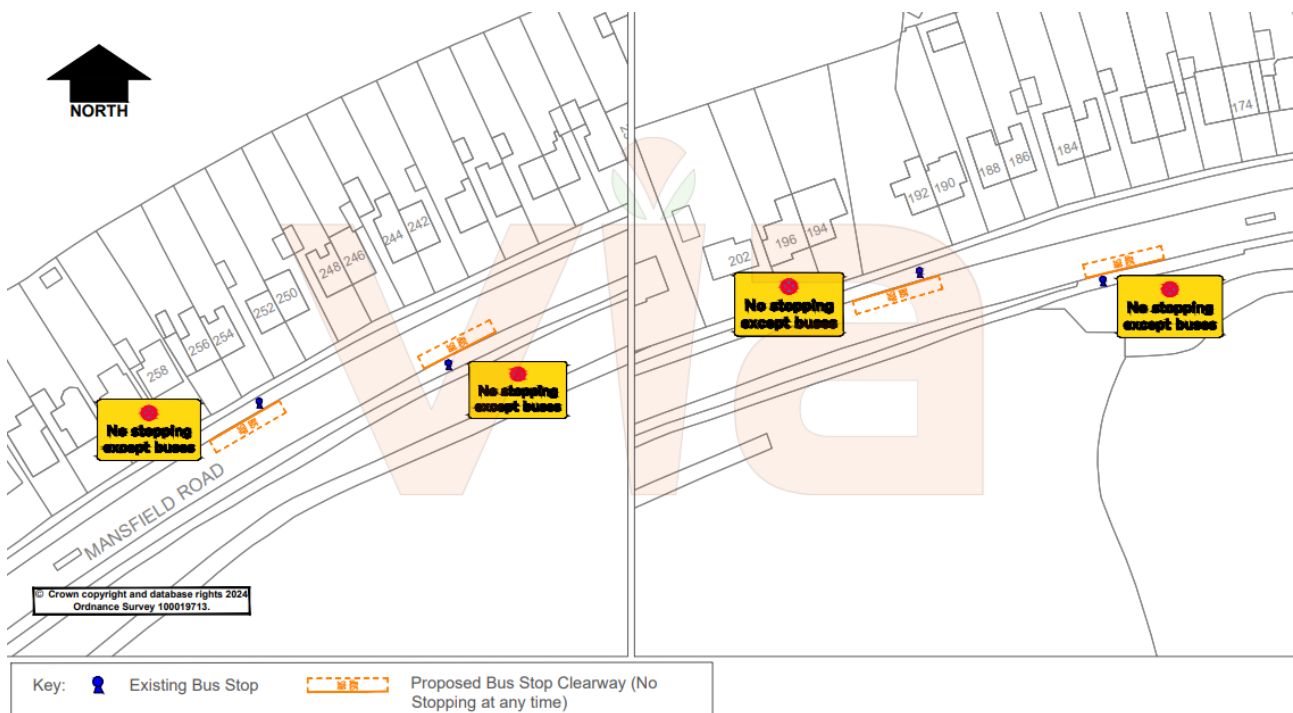
**PUBLIC TRANSPORT IMPROVEMENTS  
MANOR LODGE AND WORKSOP MANOR, WORKSOP  
(Bus Stop Refs: BA0501/BA0521/BA0500/BA0563)**

As part of Nottinghamshire County Council's on-going commitment to improve public transport in the County, we are making it easier for buses to stop in Worksop and are proposing that the locations below are now being formalised as enforceable marked bus stop clearways.

The clearways will prohibit all vehicles except buses from parking or waiting At Any Time in the bus stop areas and will be clearly identified with new road markings and signage. As a result, the bus stops will be accessible for buses serving that stop during these times.

The work proposed will, in summary, consist of:

**Bus stop refs: BA0501/BA0521/BA0500/BA0563** - 19 metre Bus Stop Clearways: No Stopping At Any Time except buses.



Written comments / objections either by letter or email to [tmconsultation@viaem.co.uk](mailto:tmconsultation@viaem.co.uk) (stating grounds and quoting the stop reference number and road name) must be received by the **20<sup>th</sup> August 2024**. Any details you provide may be shared with Nottinghamshire County Council as appropriate. If you'd like to find out more about how we use your data, please see our Privacy Notice: [www.viaem.co.uk/privacy-notice-for-the-public/](http://www.viaem.co.uk/privacy-notice-for-the-public/)

**Improvements Manager,  
Via East Midlands Ltd,  
Improvements Design Team,  
Bilsthorpe Depot,  
Bilsthorpe Business Park,  
Bilsthorpe,  
Nottinghamshire,  
NG22 8ST**

Please Scan QR Code:

