

The Nottinghamshire County Council
Installation of Raised Zebra Crossing (Compton Acres, West Bridgford)

NOTICE IS HEREBY GIVEN that the Nottinghamshire County Council in exercise of its powers under Section 23 of the Road Traffic Regulation Act 1984 (zebra crossing) and Section 90A - 90I of the Highways Act 1980 (traffic calming hump), proposes to install a raised zebra crossing across Compton Acres, West Bridgford in the Borough of Rushcliffe: -

1. The crossing will incorporate a controlled area indicated by zig-zag markings along the carriageway where **parking and loading will be prohibited**. The extents of the controlled area are: -

COMPTON ACRES, WEST BRIDGFORD (the north-east side)

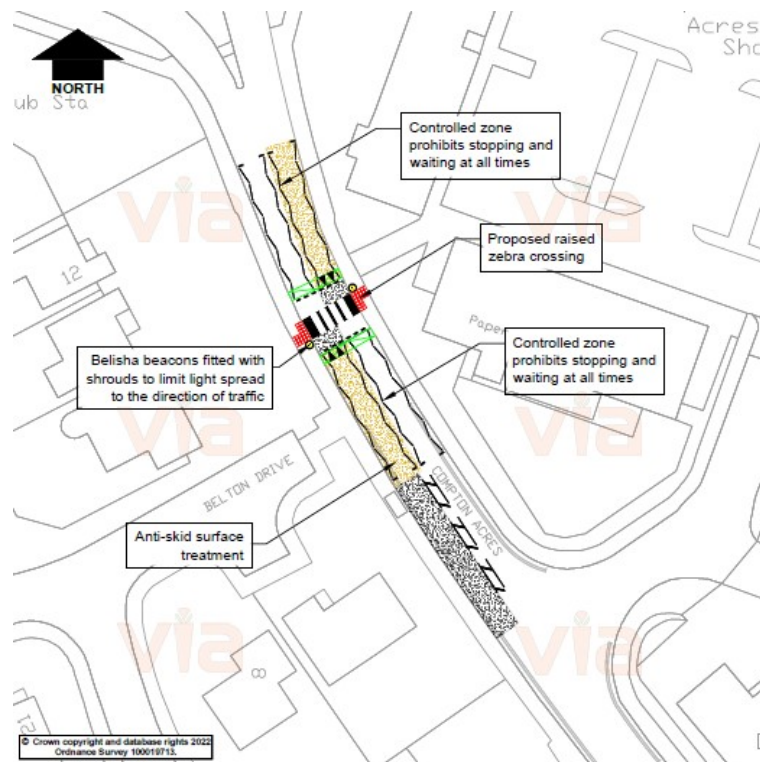
- From a point 59 metres north-west of its junction with Belton Drive in a northerly direction for 42 metres.

COMPTON ACRES, WEST BRIDGFORD (the south-west side)

- From a point 60 metres north-west of its junction with Belton Drive in a northerly direction for 42 metres.

2. The crossing will be constructed on a road hump, the effects of which will be: -

A single 75mm high, 9.5m long (including approach ramps), flat-topped hump (plateau) constructed on Compton Acres (starting) approximately 75 metres east of its junction with Belton Drive.



The crossing is being installed to assist pedestrians crossing Compton Acres including pedestrians traveling to the nearby nursery and shopping facilities. The raised crossing plateau is intended to slow vehicles down on the approach to the crossing.

Written comments / objections either by letter or email to tmconsultation@viaem.co.uk (stating grounds and quoting ref.Compton Acres – Raised Crossing) must be received by the **12th February 2023**. Any details you provide may be shared with Nottinghamshire County Council as appropriate. If you'd like to find out more about how we use your data, please see our Privacy Notice: www.viaem.co.uk/privacy-notice-for-the-public/

**Design Manager,
Via East Midlands,
Major Projects and Improvements,
Bilsthorpe Depot,
Bilsthorpe Business Park,
Eakring Road,
Bilsthorpe,
Nottinghamshire, NG22 8ST**