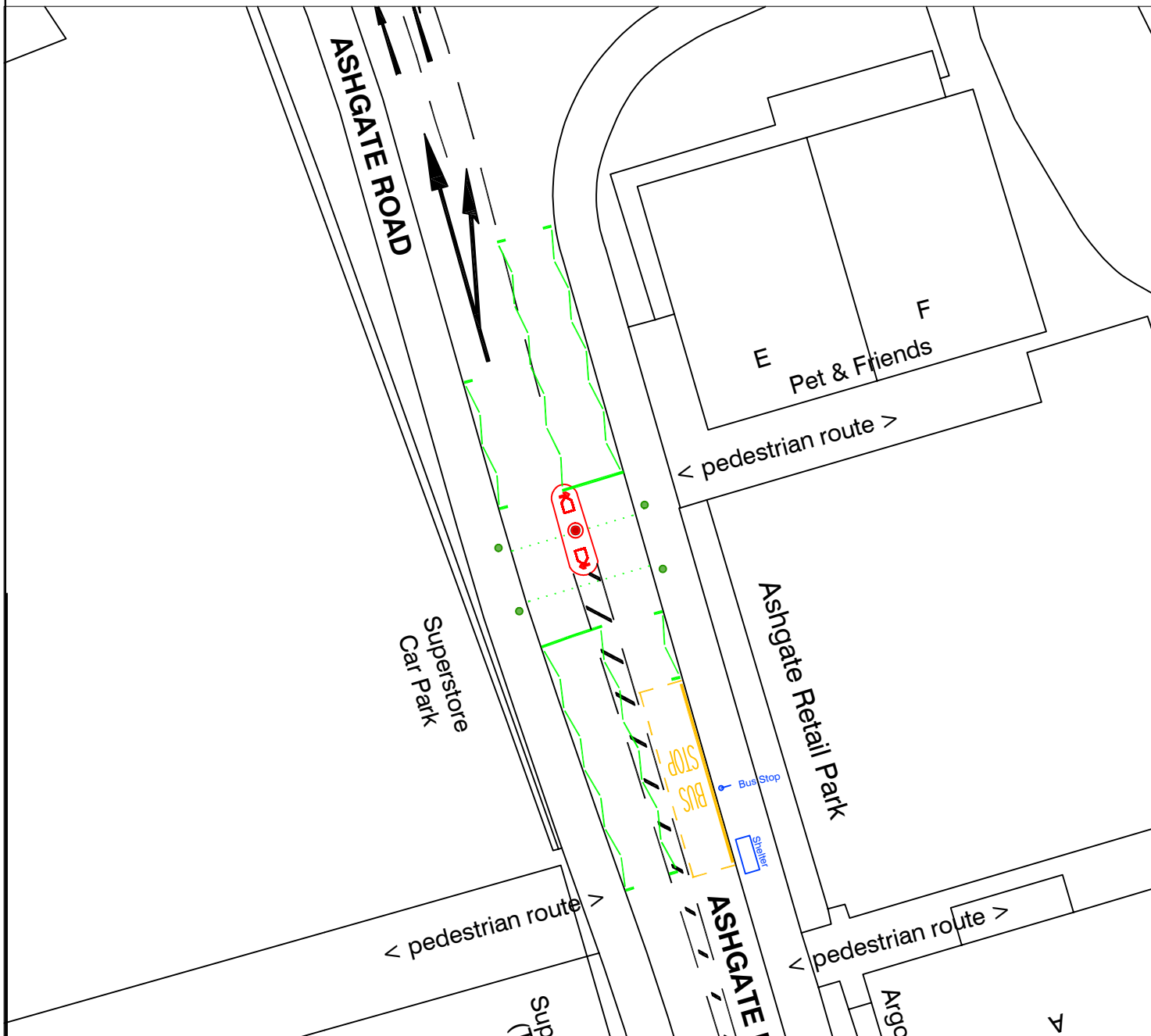






Notice is hereby given that it is proposed to install a Toucan Crossing facility on Ashgate Road near the Park and Ride Entrance in Hucknall.

The crossing will incorporate a controlled area shown by zig-zag markings, where parking and loading are prohibited.



 <p>In partnership with</p>  <p>Nottinghamshire County Council</p> <p>www.viaem.co.uk Tel: 0115 804 2100 Bilsthorpe Depot, Bilsthorpe Business Park, Nottinghamshire NG22 8ST</p> <p>© Crown copyright and database rights 2019 Ordnance Survey 100019713.</p>	Project	Ashgate Road/Hucknall P&R Hucknall - Proposed Toucan Crossing		Drawn	EC	Date	12/23
	Project No.	TP2350946		Chkd	rr	Date	12/23
	Title	Zig-Zag Advertisement Plan OS Ref: 454017/349107		Auth		Traced	
	Drawing No.	TP2350946/TS104				Scale	1/400 @A4
						Rev	

Dec 29, 2023 - 8:42am i:\Highways\Line Programme\2023-24\TP2350 946 Ashgate Road, Hucknall\B Design Phase\B03 Drawings\TP2350946 New Toucan Layout.dwg