

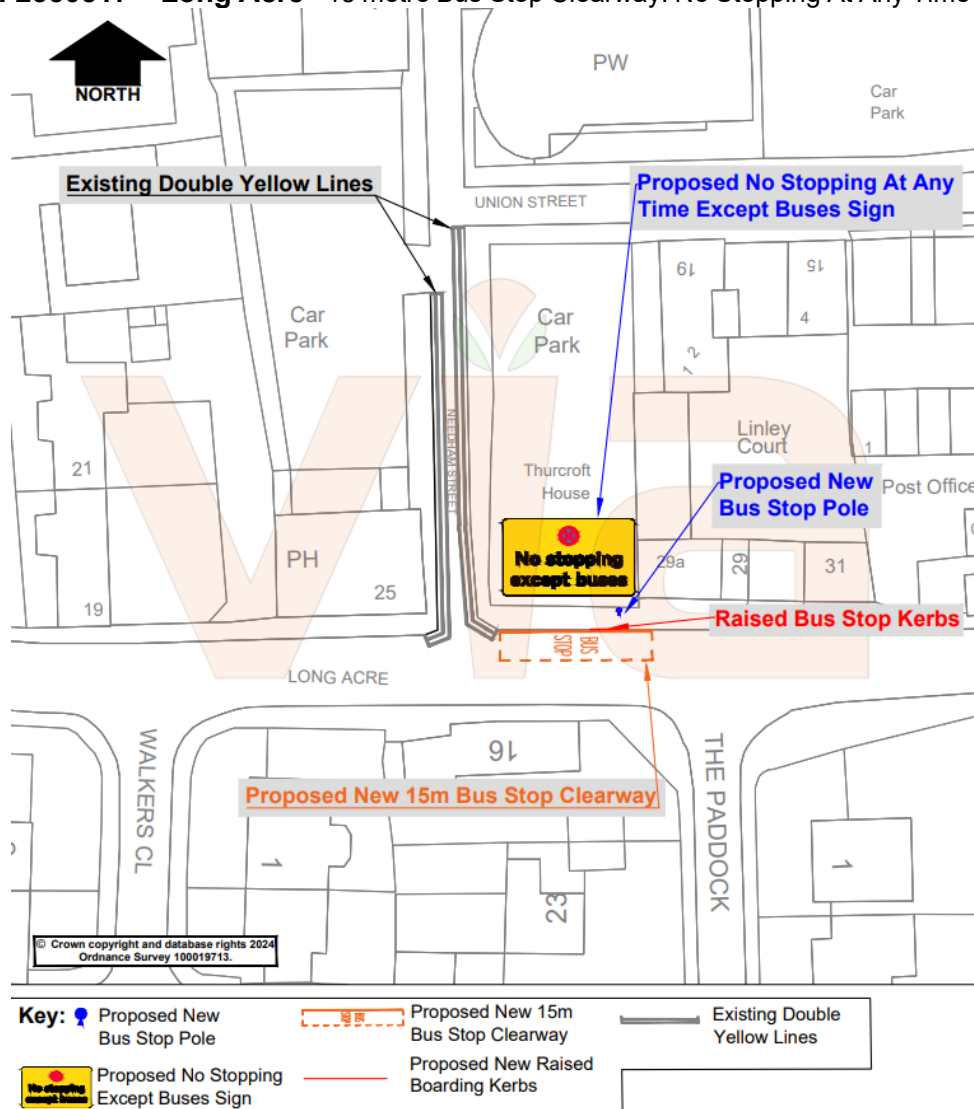
**PUBLIC TRANSPORT IMPROVEMENTS  
LONG ACRE, BINGHAM  
(Reference: 2350517 – Long Acre)**

As part of Nottinghamshire County Council's on-going commitment to improve public transport in the County, we are making it easier for buses to stop in Bingham and are proposing that the location below is to be formalised as an enforceable marked bus stop clearway.

The clearway will prohibit all vehicles except buses from parking or waiting At Any Time in the bus stop area and will be clearly identified with new road markings and signage. As a result, the proposed new bus stop will be accessible for buses serving that stop during these times.

The work proposed will, in summary, consist of:

**Reference: 2350517 – Long Acre - 15 metre Bus Stop Clearway: No Stopping At Any Time except buses.**



Written comments / objections either by letter or email to [tmconsultation@viaem.co.uk](mailto:tmconsultation@viaem.co.uk) (stating grounds and quoting the stop reference number and road name) must be received by the **31<sup>st</sup> October 2024**. Any details you provide may be shared with Nottinghamshire County Council as appropriate. If you'd like to find out more about how we use your data, please see our Privacy Notice: [www.viaem.co.uk/privacy-notice-for-the-public/](http://www.viaem.co.uk/privacy-notice-for-the-public/)

**Improvements Manager,  
Via East Midlands Ltd,  
Improvements Design Team,  
Bilsthorpe Depot,  
Bilsthorpe Business Park,  
Bilsthorpe,  
Nottinghamshire,  
NG22 8ST**

**Please Scan QR Code:**

