

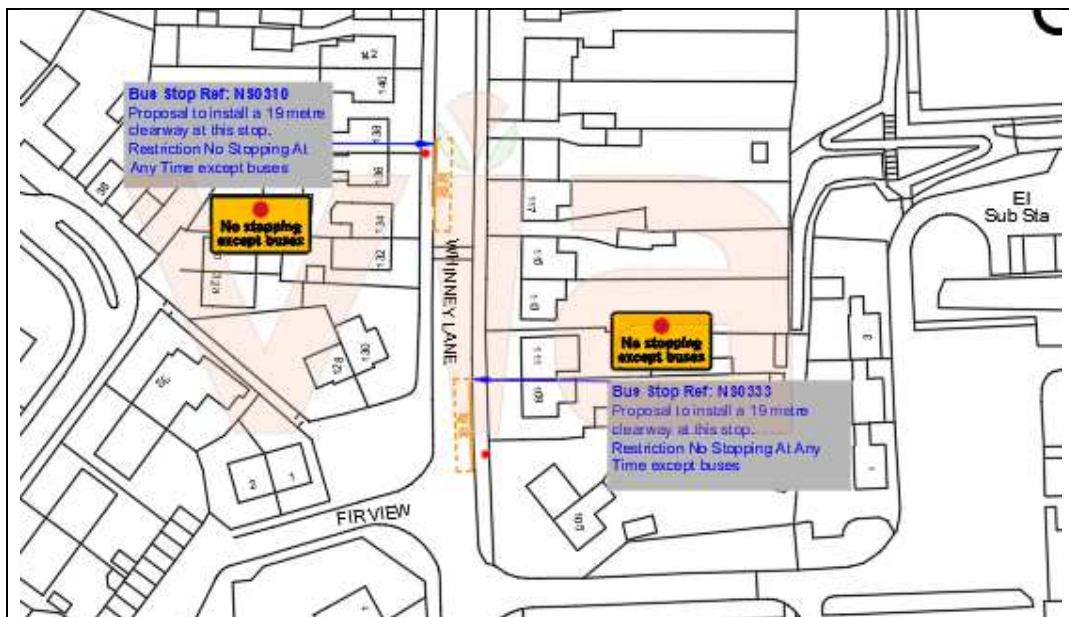
**PUBLIC TRANSPORT IMPROVEMENTS –  
WHINNEY LANE, NEW OLLERTON – (BUS STOP REF: NS0310-NS0333)**

As part of Nottinghamshire County Council's on-going commitment to improve public transport in the County, we are making it easier for buses to stop in the New Ollerton area by introducing bus stop clearways at existing bus stops.

The clearways will prohibit all vehicles except buses from parking or waiting At Any Time in the bus stop area and will be clearly identified with new road markings and signage. As a result, the bus stops will be accessible for buses serving that stop during these times.

The work proposed will, in summary, consist of:

- **Bus stops ref NS0310-NS0333** Bus Stop Clearways: No Stopping At Any time except buses



Written comments / objections either by letter or email to [tmconsultation@viaem.co.uk](mailto:tmconsultation@viaem.co.uk) (stating grounds and quoting the stop reference number and road name) must be received by the **9<sup>th</sup> October 2020**. Any details you provide may be shared with Nottinghamshire County Council as appropriate.

**Improvements Manager, Via East Midlands Ltd, Major Projects and Improvements  
Bilthorpe Depot, Bilthorpe Business Park, Bilthorpe, Nottinghamshire NG22 8ST**

If you'd like to find out more about how we use your data, please see our Privacy Notice:  
[www.viaem.co.uk/privacy-notice-for-the-public/](http://www.viaem.co.uk/privacy-notice-for-the-public/)

