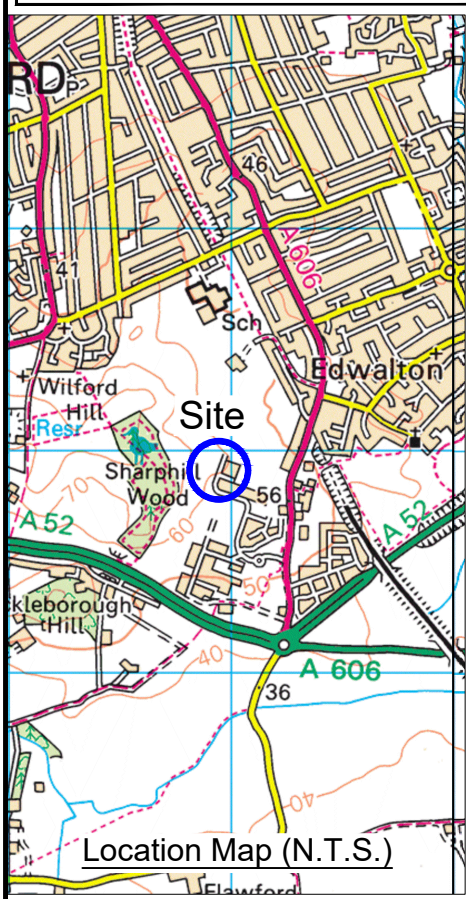
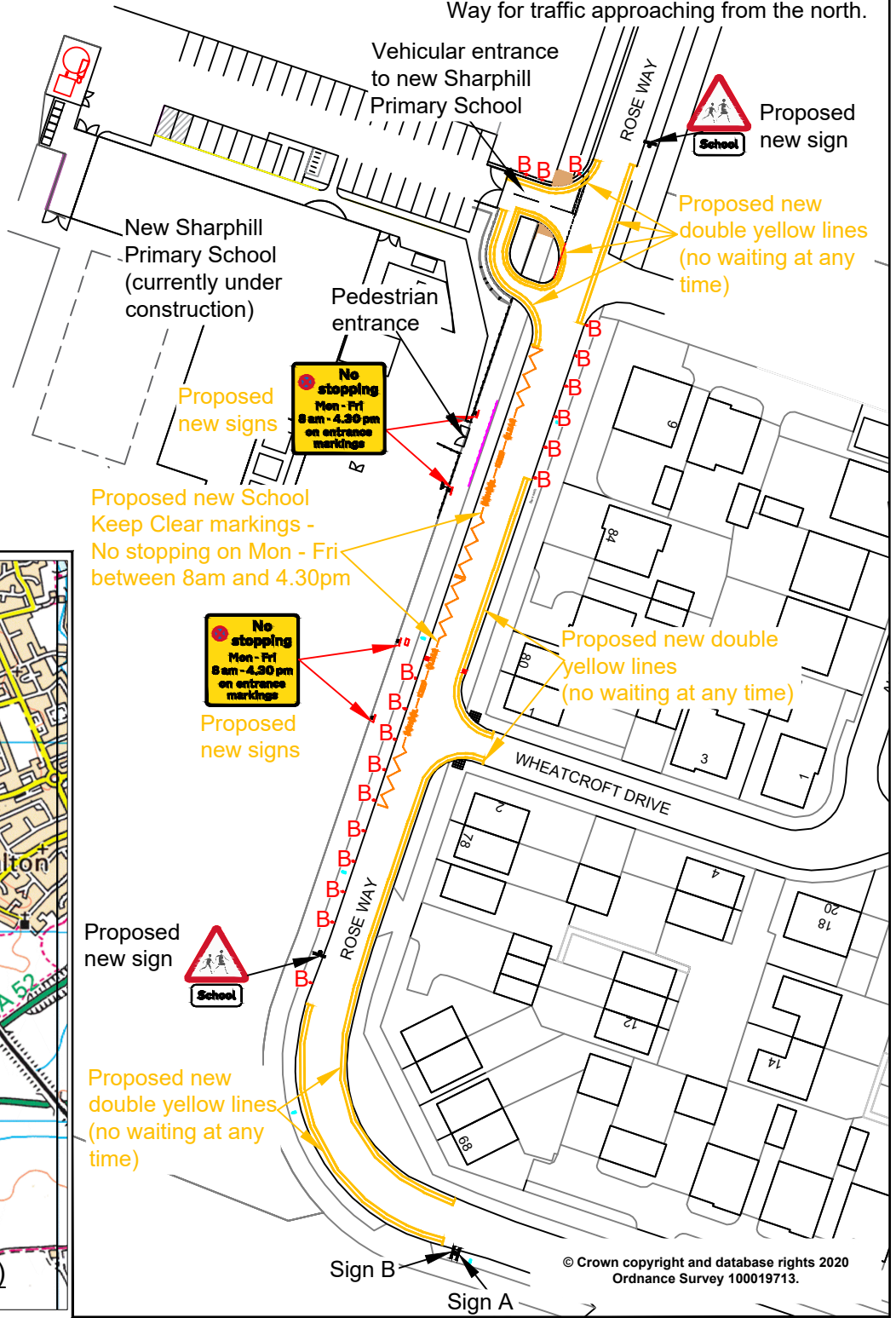




KEY
·B Bollard



Sign A and Sign B to be erected on Rose Way for traffic approaching from the north.



© Crown copyright and database rights 2020
Ordnance Survey 100019713.

Rev.	Description	Drawn	Ch'kd	Auth	Date
		J.A.B.			Feb.20
		H.N.			Feb.20

Project		New Sharphill Primary School, Rose Way, Edwalton		Drawn	Date
				J.A.B.	Feb.20
				H.N.	Feb.20
Status	Project No.	HW30702		Auth	Traced
Drawing Title				Scale	
Proposed Parking Restrictions Consultation Plan				1:1000 @A4	
Drawing No.				Rev.	
H/JAB/3329/01				0	

via in partnership with
 **Nottinghamshire County Council**
www.viaem.co.uk Tel 0115 804 2100
 Bilsthorpe Depot, Bilsthorpe Business Park, Bilsthorpe, Nottinghamshire, NG22 8ST

Mar 02 2020 - 10:23am lincadmin@notts.gov.uk\cadd\aa\Highways\Design and Construction\Roads and Highways\Projects\19-20\30000\30702 \$106 Sharphill Primary School Edwalton\Improvements\CAD\Sharphill Primary School, Edwalton PLAN.dwg