

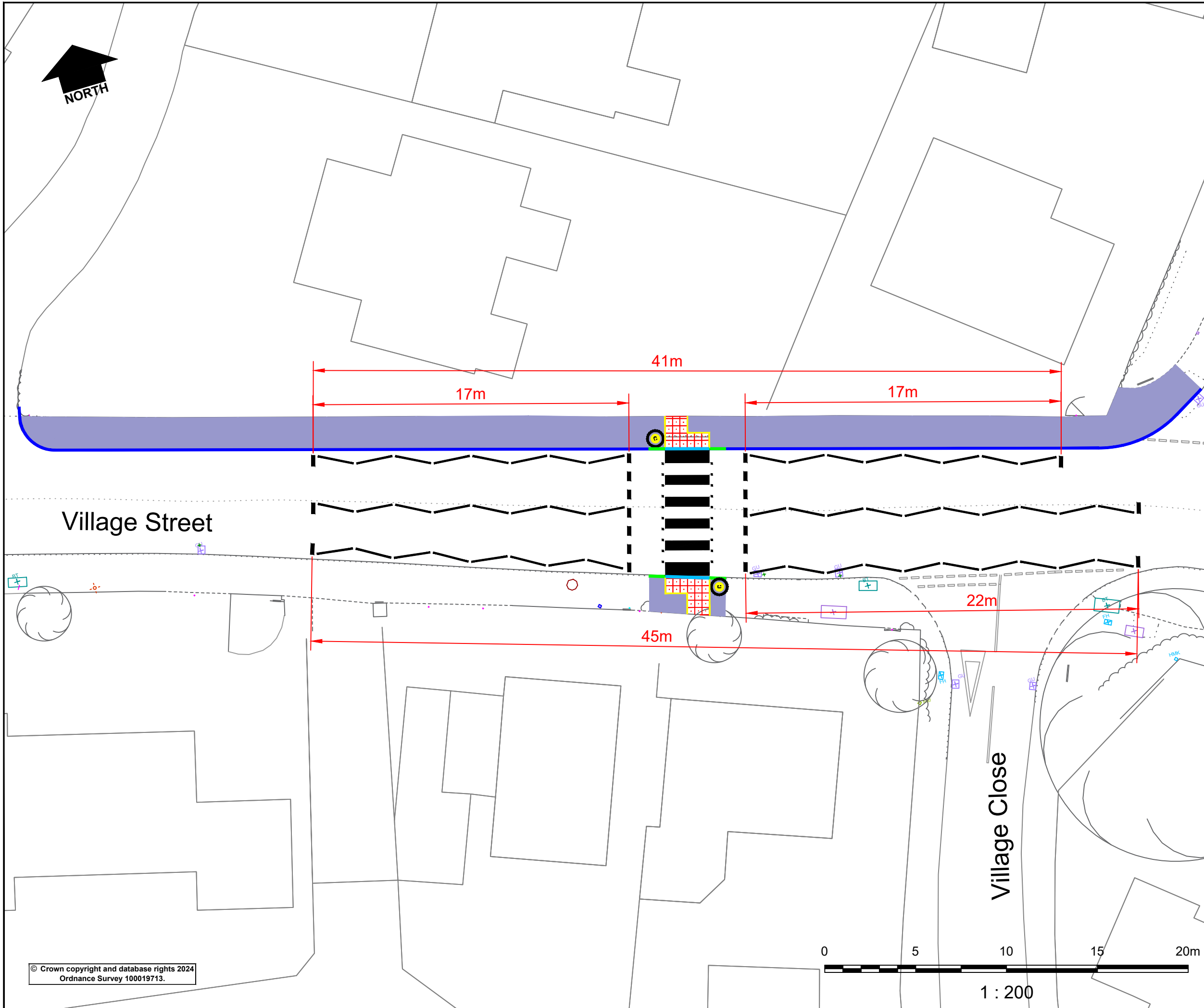


NOTES

1. This drawing is to be read in conjunction with all other relevant drawings, details and specifications.
2. Do not scale from this drawing.
3. All measurements are given in metres unless otherwise stated.

KEY

	Existing Arrangement
	Transition kerb
	'Dropped' BN kerb, 6mm upstand.
	HB2 kerb, 125mm upstand
	50mm Edging
	Belisha Beacon (location tbc)
	Tactile paving
	Replace footway paving with standard footway construction



Rev	Description	Drawn	Ch'kd	Auth	Date

Project
Village Street, Edwalton - Zebra crossing

Project No.
TP2450348

Drawing Title
Consultation plan

Status Code	Drawing Suitability	Revision
S2	WIP / SUITABLE FOR INFORMATION	0
Scale (@A3)	Drawn	Date
1:200	HC	Oct 24
	Ch'kd	Date
	BM	Oct 24
	Auth	Date
	BH	Oct 24

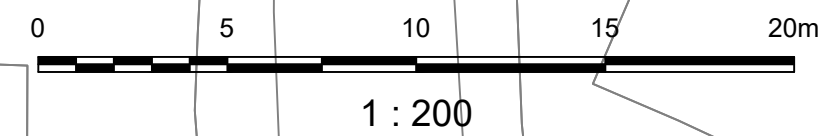
Project Originator | Volume | Location | Type | Role | Number
2450348-VIA-HGN-ZZ-DR-CH-003

in partnership with




www.viaem.co.uk Tel 0115 804 2100
Bilthorpe Depot, Bilthorpe Business Park, Bilthorpe, Nottinghamshire, NG22 8ST

© Crown copyright and database rights 2024
Ordnance Survey 100019713.



© Via East Midlands Limited, Registered in England no.09903246

Nov 05 2024 - 2:46pm C:\Users\HC178\OneDrive - Via East Midlands Ltd\Desktop\Village Street preliminary design.dwg